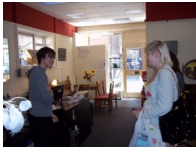


Renaissance Centre

Tower Street, Ludlow SY8 1RL

Customer Service Assistant



In our shop we need help with answering telephone calls, dealing with enquiries, making sales, using the till and credit

card machine, keeping displays looking attractive and using a computer. We are flexible with time as you are being generous with yours, but ideally either 9.30am - 1pm or 1pm - 5pm.

Bookshop Assistant

We have a small bookshop with a vast array of literature ranging from rare hardback first editions to paperback holiday reads. The books need to be catalogued, priced and displayed. You would assist our resident book expert. This opportunity is available for week day mornings.



SSFS Re-use Centre

Weeping Cross Lane, Ludlow SY8 1JH

- ◇ customer service assistants
- ◇ warehouse assistants
- ◇ van drivers and van buddies
- ◇ textile/bedding sorters
- ◇ crockery sorters
- ◇ cleaner of white goods and items for sale



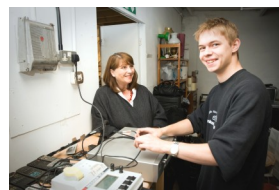
Waste Management Project

Could you help us to dismantle sofas, washing machines and other items ready for the recycling process?

Times to suit you, but you will need to be reasonably fit as it's quite hard work!

Electrical Testing

We would like volunteers to assist with the function testing of the electrical appliances. You would work alongside a trained member of staff for this role - times to suit you.



Carpentry Workshop

Lower Galdeford SY8 1RZ

Volunteers carry out a variety of tasks from stripping and polishing donated furniture to more challenging projects. Hours to suit, mornings, afternoons or all day to fit in with our current team. You will be provided with full workshop training, the opportunity to gain a qualification, support and an allowance for travel expenses.



Rockspring Community Centre

Sandford Road, Ludlow SY8 1SX

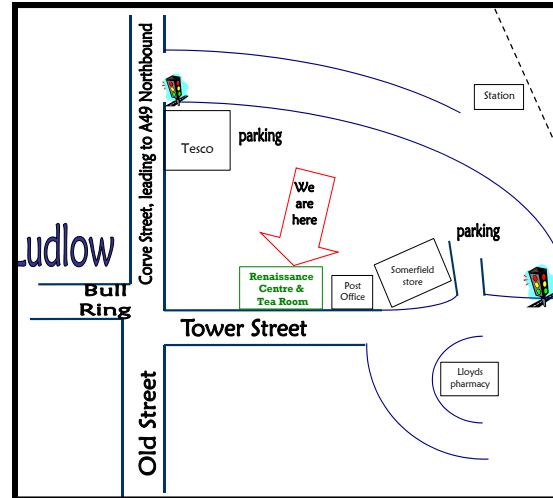
- ◇ meet and greet centre users
- ◇ answer the telephone
- ◇ event support assistants
- ◇ general administration



Can you do any of the following?

- ◇ customer service
- ◇ van driver
- ◇ warehouse assistant
- ◇ van buddy
- ◇ bookshop assistants
- ◇ carpentry workshop assistants
- ◇ cutlery and crockery sorter
- ◇ textile sorter
- ◇ waste management project assistant
- ◇ meeting and greeting
- ◇ administration
- ◇ appliance cleaner
- ◇ electrical tester
- ◇ events support assistant

For further information on any aspect of the scheme or if you wish to donate you can contact us in the ways listed below



All of the volunteering opportunities provided by the Furniture Scheme come with full training and an allowance for travel expenses

We believe in continual improvement and therefore we welcome feedback. Your comments, complaints or suggestions will be dealt with appropriately by Jean Jarvis, Chief Executive, who can be contacted by email, letter or telephone

South Shropshire Furniture Scheme
7-8 Tower Street, Ludlow,
Shropshire SY8 1RL
Tel: 01584 877751
chrisc@furniturescheme.co.uk
www.furniturescheme.co.uk

Could you please help us to help others in the local community?

Volunteering with South Shropshire Furniture Scheme



Contact Chris Christie
Tel: 01584 877751
Email: chrisc@furniturescheme.co.uk



Registered charity 1082068

Company number 4041051